

## **TrAVL PRO AVL/GPS Tracking For PassPort and Connect Plus**

For TrAVL PRO we officially support IE9, Google Chrome (current versions) and Mozilla Firefox (ver4 released 3/14/11 and ver5 released 6/21/11). IE9 only works with Win Vista & Win 7, so for the users who have XP there are 3 possible solutions:

- Upgrade to Vista or Win 7 and install IE9
- Run Google Frame (this app is free)
- Run Google Chrome or Mozilla Firefox (both are free)

Older versions of Internet Explorer will not be supported as their performance is not good enough for current TrAVL PRO and the way it works now.

Web site for TrAVL Pro is [www.travltrack.net](http://www.travltrack.net)

User Names are in lower or upper case, Passwords can be both upper and lower case and include symbols like \* # \$ % ) ? !. Minimum length is 4 characters and maximum length is 8 characters.

Using IE8 requires the Google Chrome Frame be installed on the computer, which is a free application. The first time you access the web site, there is a link bar at the top that lets the user install Google Chrome Frame.

IE9 and Vista or Windows 7 will work with no changes. We realize that it may cause some issues for customers with XP, but going forward, XP is going away and the new web site needs to be compatible with future operating systems.

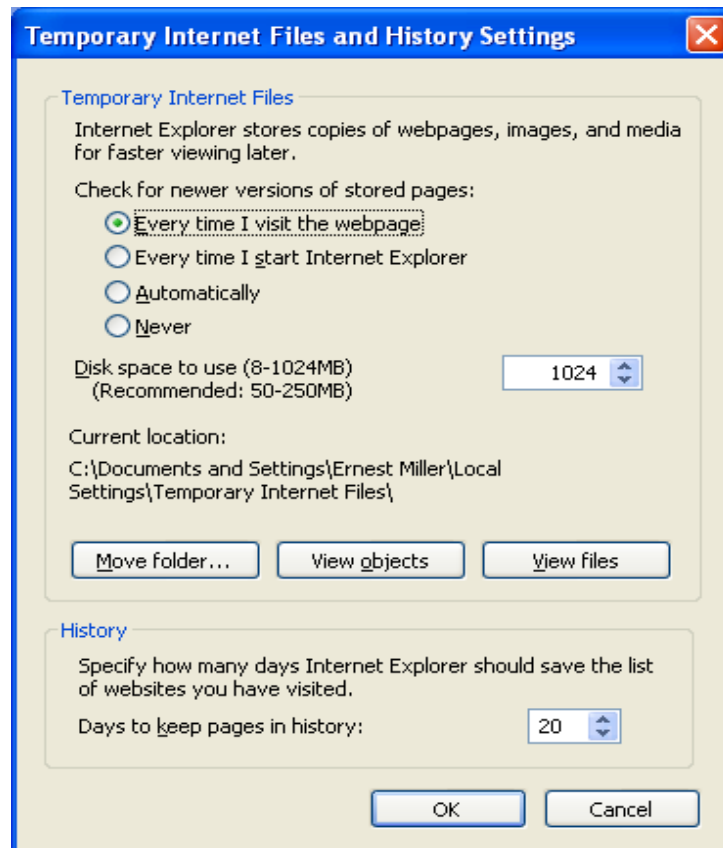
If you do not install Google Chrome Frame, the web site will not operate properly. There are no plans to change TrAVL Pro. If a user does not want to install Google Chrome Frame, then they should use the old web site at [www.travltrack.net](http://www.travltrack.net). However, it will not work with Connect Plus and will not be supported after January 1<sup>st</sup>, 2012.

# Using Windows XP

The following must also be changed in IE8. This is found under Tools, General Tab, Browsing History, Settings. Changing it does not effect any other operation of IE8.

Set to “Every time I visit the webpage”

Install Google Chrome Frame and it will work correctly.

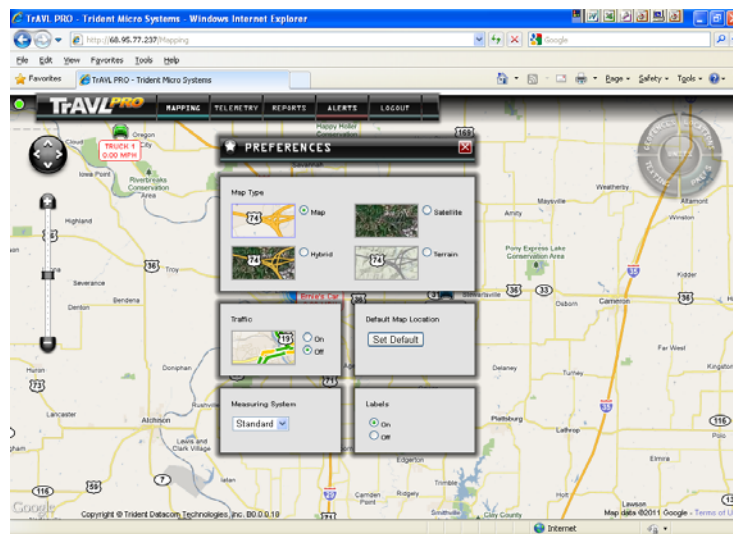


## Web Site Features

TrAVL Pro offer users will see several new features over our existing TrAVL mapping web server.

With TrAVL Pro each user will have a separate login and password. This lets each user set their default mapping zoom level and center map location. By clicking “PREFS” and “Set Default” the current location can be saved for each user login.

We can also customize access to the units that each login sees. Managers can see all units, others can be limited to the ones they have access to based on the privileges they are assigned. Future releases will even let the customer decide who sees what via a management login.



Other default settings are Map, Hybrid, Satellite, Terrain, Traffic and Labels.

Right clicking on a vehicle brings up Info, Nearest Units, Tracking (opens a separate small tracking window) Settings (Speed Limit and email address) and Text Messaging for Connect Plus Units (Not compatible with PassPort)

Under Reports, select a unit, Period and Generate. A map will display each reported location for the period. By double clicking the displayed title bar, you can hide the reported locations, showing only the map.

You can zoom in one time by holding down the Shift and Control keys and a left click on your mouse, you can create a new zoom box to zoom in.

